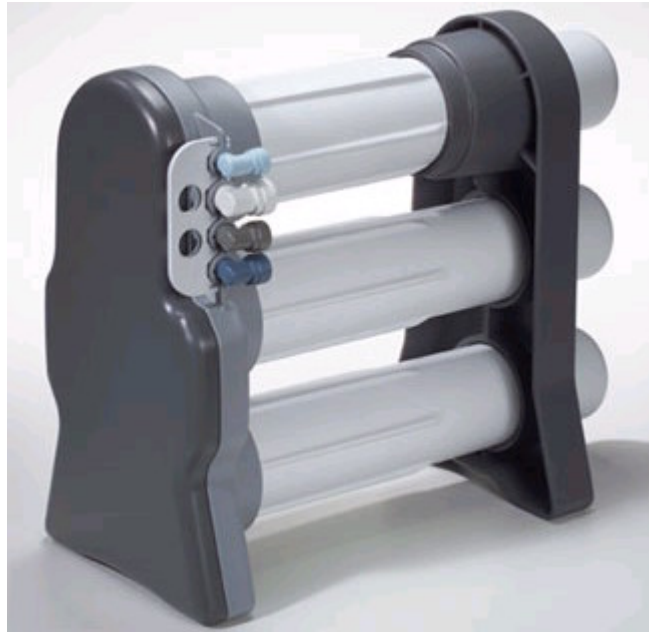


Merlin™ Point-of-Use Drinking Water System



Merlin point-of-use Reverse Osmosis System

The biggest innovation in home RO technology in 30 years!

We've done it again. GE Infrastructure Water & Process Technologies has achieved a revolutionary breakthrough in the water treatment industry. Out-of-the box thinking and years of research have produced a totally new point-of-use drinking water system.

The new Merlin RO System features continuous-flow water production, so a storage tank is no longer required. The unit operates on line pressure, which eliminates the need for an electrical pump in most applications. The patented high-production, low-energy membrane reduces impurities in up to 720 gallons (2,725 liters)* of water per day!

This high capacity performance creates new opportunities for commercial applications – at the price of a residential system.

Big innovation, bigger opportunities.

Like no other system!

- Continuous flow – no storage tank necessary
- Uses line pressure only (>40 psi/2.76 bar)
- 1/2 gpm (1.89 lpm) permeate rate @50 psi (3.44 bar) + 77°F (25°C)
- Requires no pump, no electricity (>40 psi/2.76 bar)
- Compact design – fits easily under sink
- Water Quality Association Gold Seal – NSF/ANSI 58 Certified
- Consistent membrane efficiency
- Complete product literature and training support
- Consistent high recovery system means less water going to drain
- Multiple dispensing locations off one system

*At 50 psi (3.44 bar), 77°F (25°C)

TOUGH STUFF

High-durability Noryl® and polypropylene plastic construction provide years of dependable service

ALL THE RIGHT CONNECTIONS

Engineered for the fewest number of connection points – less chance of leaks

NO TANKS!

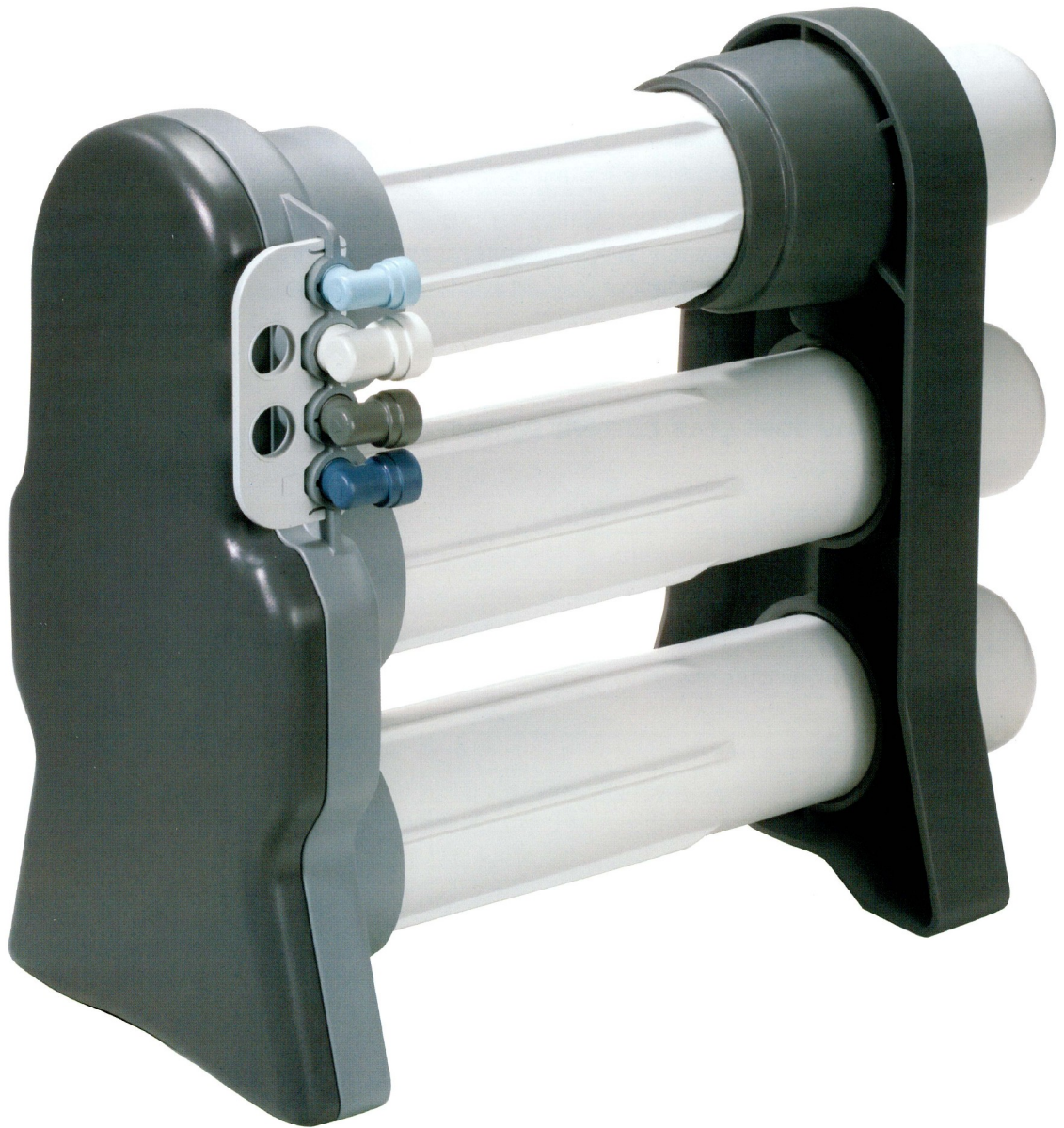
Loss of tank pressure and contamination worries are eliminated

SLEEK, GOOD LOOKS

Contemporary, appliance-style design creates consumer appeal

NEVER RUNS DRY

Continuous permeate water flows at 1/2 gpm (1.89 lpm)



IT'S A SNAP

Quick-latch snaps into place and locks down all four tubing connectors in one easy step



STEADY STREAM OF INCOME

Custom replacement components will be made available only through professional channels



BUILT-IN CONVENIENCE

System's support leg also serves as a handy sump wrench



AT YOUR SERVICE

Custom high-flow faucet (with air gap) developed specifically for this system



FITS IN NICELY

Stand-alone compact profile takes up less space than other bulky systems



A world of possibilities

Safe, clean water is in the news and on the minds of today's consumers. The Merlin Reverse Osmosis System addresses those concerns. Water treatment professionals will now have a truly innovative product that opens doors and provides homeowners with effective, economical solutions.

The commercial market also presents unique opportunities for growth. The Merlin RO System is fully capable of serving a variety of applications such as restaurants, pubs, water coolers, ice-makers, aquariums and more – all at a price point well below current commercial systems.

How does your current system compare?

	Merlin RO	Standard RO
Average Daily Production Rate*	720 gpd	10-50 gpd
Water Storage Tank	None needed	Integral part of system
Install Time	1 Hour	Up to 4 Hours*
Designed for Use with Refrigerator Ice Makers	Yes	No
System Efficiency**	25-33%	As little as 5%
Dispensing Locations	2+	1-2

*Based on inlet conditions of 50 psi (3.44 bar), 77°F (25°C).

**Efficiency rating is identical to recovery rating when the system is tested without a storage tank or when a storage tank is bypassed.

Performance Specifications†*

Specification	Minimum	Maximum	Average
Permeate Flow Rate**	0.33 Gallons/Minute (1.25 Liters/Minute)	0.75 Gallons/Minute (2.84 Liters/Minute)	0.50 Gallons/Minute (1.89 Liters/Minute)
TDS Rejection (NaCl)**	90%	99%	93%

†Based on 50 psi (3.44 bar), 77°F (25°C), 750 mg/L NaCl, 25% recovery.

*Specifications based on GE Osmonics internal test data.

**For complete WQA test results to NSF/ANSI 58 Standard, see Merlin product data sheet P/N 1263717.